

## **SIGNature Rooflights**

Cost effective range of both opening and fixed roof lights for flat roofs



## **SIGNature TRADE - POLYCARBONATE**

### **Contemporary Design**

SIGNature Trade rooflight is a modern take on a dome design with sleek, contemporary aesthetics inside and out. It is a low-rise aerodynamic glazing unit with steep kerb walls allowing for a larger glazing area, which equates to more natural daylight inside. With cabling and actuators hidden within the kerb, on mains powered units, the whole unit offers a pleasing minimal silhouette.

### **Easy to install**

- Delivered to site complete and ready to fit in robust packaging for easy handling
- Multi-wall PVC kerb is robust and resilient to damage during installation
- Other kerb and fixing options available to suit project requirements
- The tapered kerb foot radius facilitates easy application of roof covering to the termination point without the need for timber fillets

### **Robust, durable and secure**

- Secure fixings with tamper-proof caps
- Marlon FSX Longlife polycarbonate, with UV protection for weatherability and an impact resistance 200 times greater than glass
- Optimum thermal performance as standard with U-value of  $1.8\text{W/m}^2\text{k}$  and options to reduce this to  $0.9\text{W/m}^2\text{k}$
- Constant separation of glazing skins across full width of dome including fixing flange, avoids cold spots and minimises the risk of condensation
- Extensive options to satisfy acoustics, ventilation and light transmission



SIGNature Trade is the standard specification dome in the range and comes complete with a host of benefits as standard to satisfy a range of projects and budgets.

### **BENEFITS**

- MAXIMUM DAYLIGHT
- CONCEALED COMPONENTS
- PRE FINISHED INTERNAL WALLS
- THERMALLY EFFICIENT TRIPLE WALL STRUCTURE
- LIGHTWEIGHT, ROBUST AND RESILIENT TO DAMAGE

## **SIGNature TRADE - GLASS**

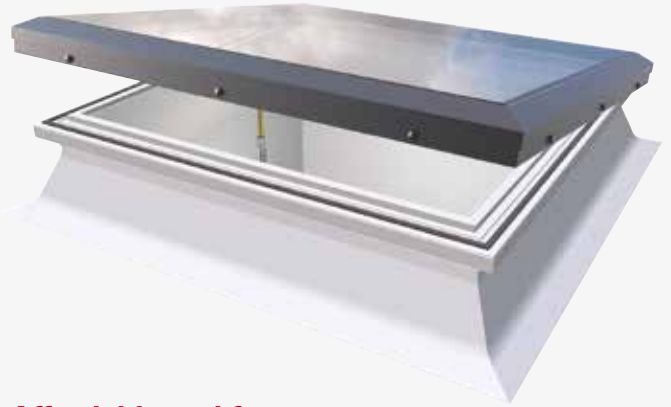
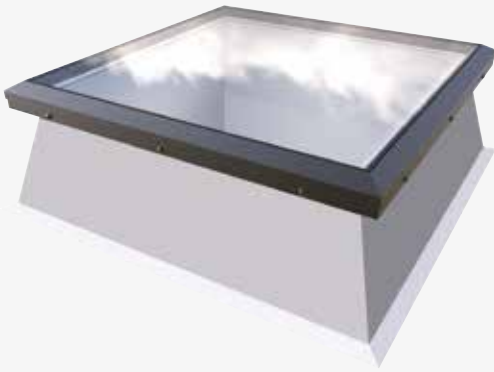
### **Elegant, affordable daylight...fast!**

SIGNature Trade Glass rooflights is the latest addition to the extensive range of SIGNature modular rooflights. This elegant flat glass rooflight provides quality features at highly competitive prices.

Designed with both the building owner and installer in mind and to cater for the large and growing trend for flat roofed home extensions and light, bright open plan living. SIGNature Glass Trade is also equally at home on larger commercial property developments giving homeowners and larger construction trades alike the ability to quickly and confidently bring stylish daylighting to all types of buildings.

### **Premium features**

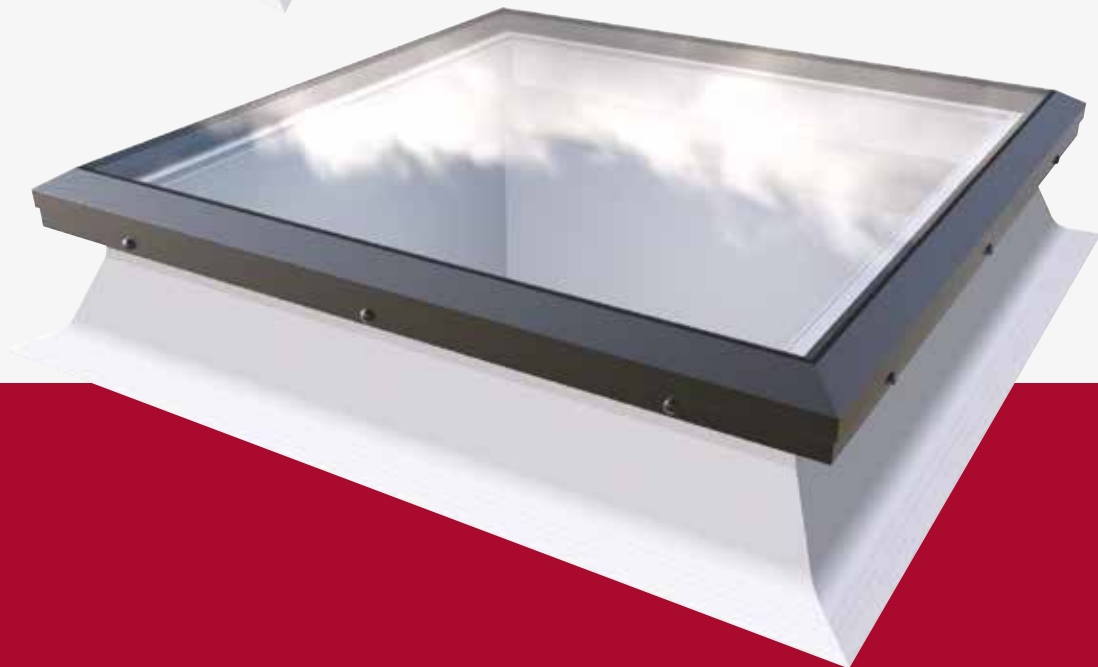
Being thermally broken and non-fragile as standard, with an array of opening, ventilation and fixing options to suit a multitude of requirements. SIGNature Glass Trade is an efficient, safe, and versatile flat glass rooflight that can be relied upon.



### **Affordable and fast**

SIGNature Glass Trade has been designed for rapid, efficient manufacture and installation, delivering a quality flat glass rooflight in the budget and time frame that modern construction projects demand.

- **Modern and stylish flat glass rooflight design**
- **Optional multiwall PVC white kerb which conceals all cabling and actuators on mains powered opening units on many sizes**
- **Elegant aluminium frame powder coated to RAL 7016**
- **Thermally broken construction**
- **Double glazing offering centre pane U-value of 1.1W/m<sup>2</sup>K**
- **Acoustic noise reduction of 39dB**
- **Glass specification is non fragile to CWCT TN92 for overhead glass**





## SIGNature TRADE - SMOKE VENT

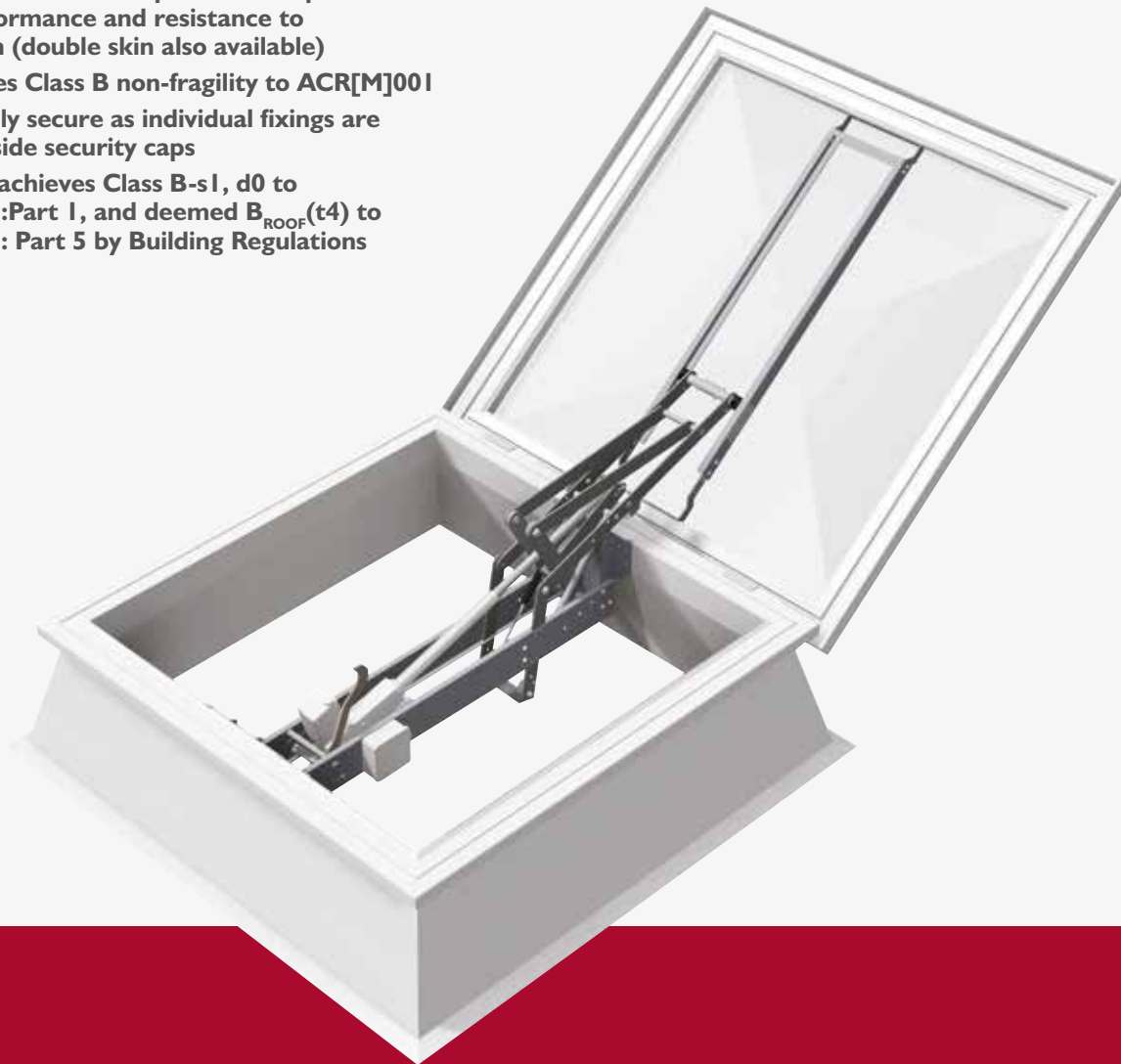
### EN 12101-2 Certified Smoke Vent

SIGNature Trade Smoke Vent rooflights are individual polycarbonate domes intended for easy installation on flat and low pitch roofs of all modern building types to provide natural smoke and heat exhaust, as well as comfort ventilation.

Designed, fully tested and certified in accordance with EN 12101-2, they meet standards for safety, security, non-fragility and fire safety and we offer the full guarantee of an established, accredited UK manufacturer.

### Key features and benefits

- Thermal performance - triple skin for optimal thermal performance and resistance to consideration (double skin also available)
- Safe - achieves Class B non-fragility to ACR[M]001
- Secure - highly secure as individual fixings are concealed inside security caps
- Fire Rating - achieves Class B-s1, d0 to BS EN 13501:Part 1, and deemed B<sub>ROOF</sub>(t4) to BS EN 13501: Part 5 by Building Regulations



### ACCESSORIES AVAILABLE:

- CONTROL PANEL SYSTEM
- FIRE SWITCH
- FIREMAN'S PRIORITY SWITCH
- SMOKE DETECTOR

## SIGNature REFLEX

SIGNature Reflex is a glazing only unit designed specifically for refurbishment projects where the glazing only needs to be replaced. The unit is supplied with a fixing kit including weathertight washers and cover plugs. Manufactured from Marlon FSX Longlife polycarbonate, this glazing unit is up to 200 times stronger than glass. The high resistance to breakage and adverse weather conditions means SIGNature Reflex is very safe and reliable.

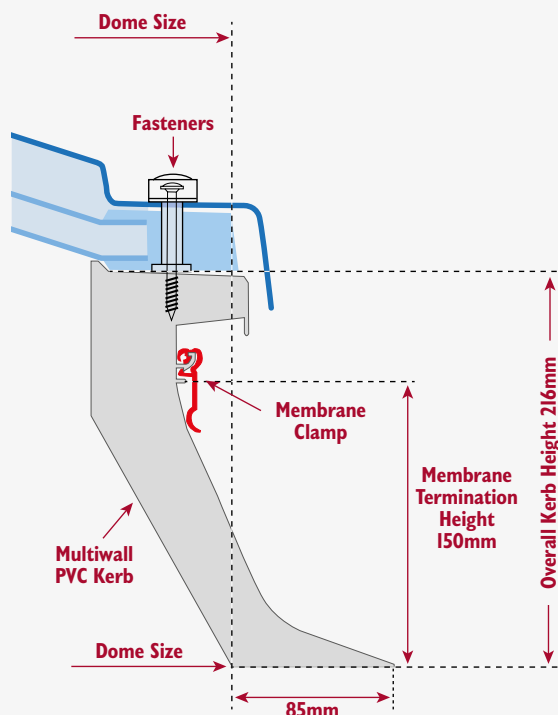


- **Dome or pyramid option**
- **Can be mechanically fixed to existing kerbs**
- **Single, double and triple units available**
- **Available with standard 70mm or 100mm wide flange options to accommodate varying upstand sizes**

## Water proofing termination detail

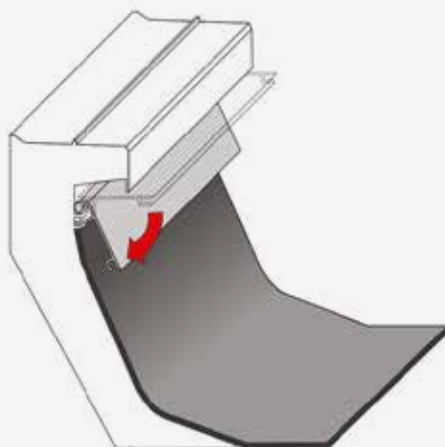
### Membrane clamp for single ply membrane

- **What is it?**
  - Rigid PVC extrusion with flexible tip, factory fitted to PVC kerb
- **What does it do?**
  1. Holds roofing covering in place to eliminate peel back
  2. Provides extremely neat finish
- **Benefits**
  - Quick and simple installation procedure
  - Ensures single ply membrane does not peel away from kerb at termination point in the future



### Cover Trim for bituminous membrane

- **What is it?**
  - Aluminium extrusion with dual function, factory fitted to PVC kerb
- **What does it do?**
  1. Up position (as supplied) - protects dome from torch damage during installation
  2. Down position - flashes over waterproofing termination and provides neat finish
- **Benefits**
  - Quick and simple installation procedure
  - Forgiving of heavy handed / untidy waterproofing
  - Protects dome from torch damage for better finish



## About SIG Design & Technology

SIG Design & Technology is a part of SIG Roofing, a leading division of SIG plc, a FTSE listed company and the UK's market leading specialist supplier to professionals in the building and construction industry.

SIG Design & Technology has put together an 8-step guide to identify the challenges and ensure that a roof's design meets a building's requirements.

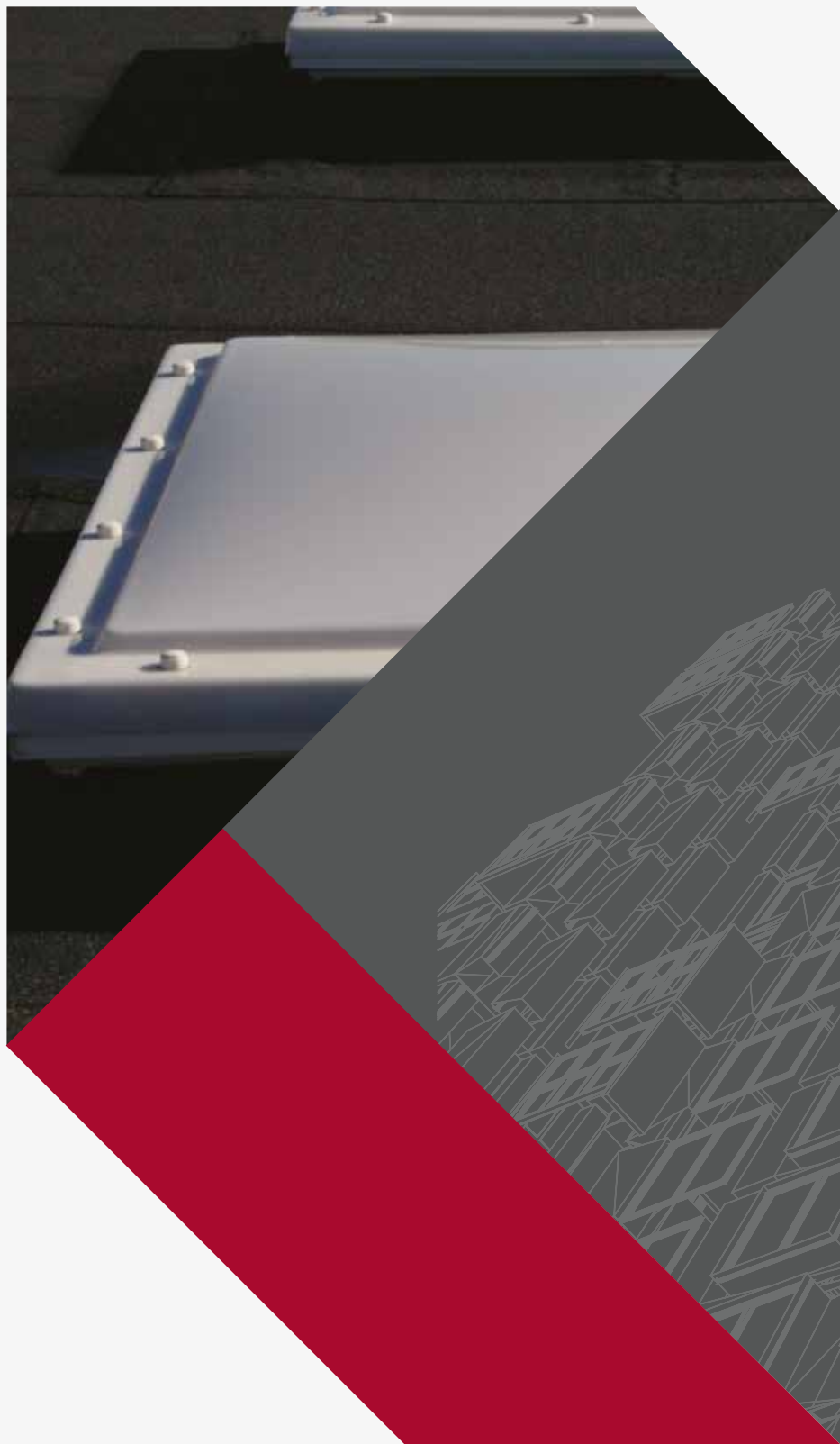
Called *#PerfectRoof*, the eight steps follow the process from product selection and design expertise through to full guarantees and planned maintenance. Its know-how is just part of the service that is provided absolutely free to customers.



## Take the risk out of roof design...

### ■ The right products for your project to meet requirements for:

- *Carbon capture*
- *Insulation*
- *Roof longevity*
- *Energy generation*
- *Design covered by our PI insurance*
- *Genuine choice of waterproofing*
- *Part of a FTSE 250 company*



SIG Design & Technology  
Mannheim House, Gelders Hall Road,  
Shepshed, Leicestershire LE12 9NH  
Tel: 01509 505714  
[www.sigdandt.co.uk](http://www.sigdandt.co.uk)