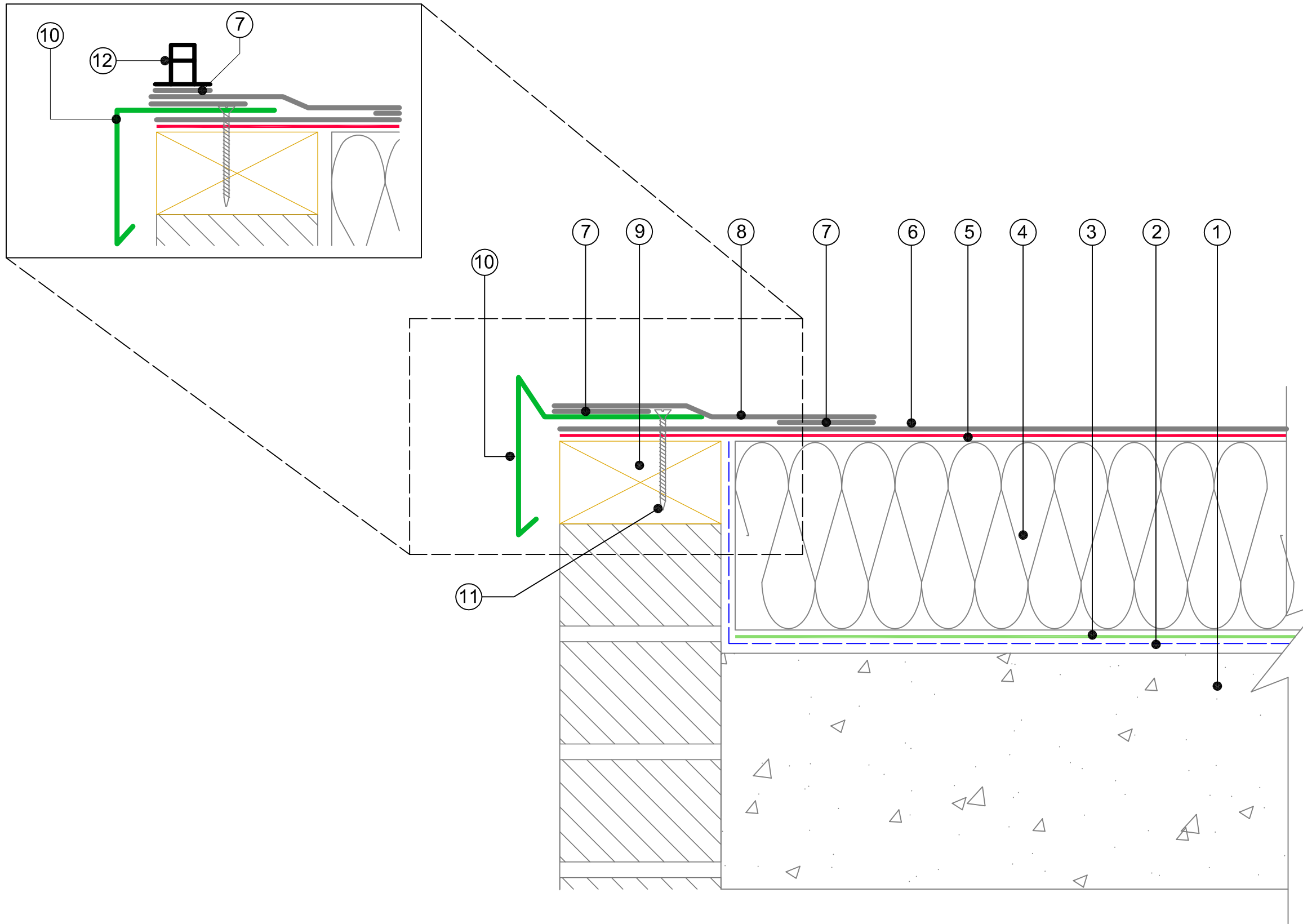


Alternative Water Check Detail



- ① Structural Deck
- ② SIG D&T Bituminous Vapour Control Layer with Primer
- ③ FDT Adhesive U applied in strips
- ④ SIG D&T Tissue faced Insulation - thickness as specified
- ⑤ Rhenofol CGv PU Adhesive applied in strips
- ⑥ Rhenofol CGv single ply membrane
- ⑦ Hot Air Weld
- ⑧ Rhenofol CV single ply membrane
- ⑨ Timber Hard Edge
- ⑩ Rhenofol PVC Coated Metal
- ⑪ SIG D&T Full Length Fixing
- ⑫ Rhenofol Standing Seam Profile - welded to Rhenofol membrane. Profile to act as water check.

Waterproofing should be installed in accordance with BS 6229:2003 and FDT fixing instructions.

The details shown are indicative and for approval only and do not form part of any contract.

Data sheets for all FDT products are available on request.

Project specifications are available on request.

Further information on all FDT products and services as well as SIG D&T products can be obtained through the contact details printed below.



SIG Design & Technology  
 Mannheim House, Gelders Hall Road  
 Shepshed, Leicestershire LE12 9NH  
 Tel: 0844 443 4778 Fax: 01509 505475  
 Internet: [www.singleply.co.uk](http://www.singleply.co.uk)  
 Email: [info@singleply.co.uk](mailto:info@singleply.co.uk)

TITLE:  
**CHECK KERB DETAIL**

DATE: 26.08.2015	DRAWN BY: RH	SCALE: NTS
---------------------	-----------------	---------------

DRAWING No: CGv-2b	REVISION:
-----------------------	-----------