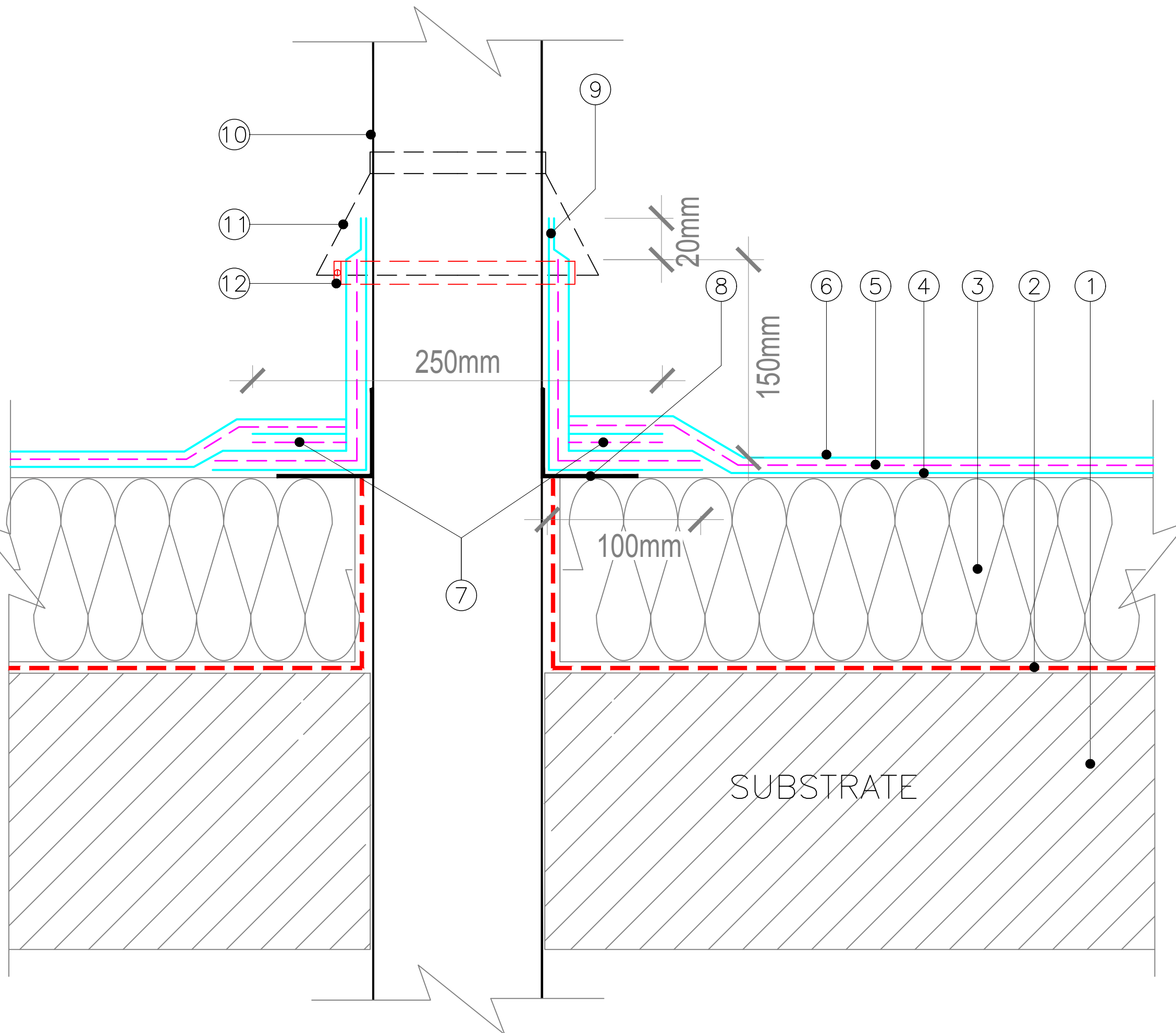


1. Substrate to minimum of 1:80 achieved falls primed as required for VCL
2. SIG D&T Vapour Control Layer
3. SIG D&T approved Insulation bonded with IKOpro high performance PU adhesive. Boards to be primed with AH+ WP Primer and all joints to be sealed with AH+ Jointing Tape
4. AH+ Base Coat
5. AH+ Reinforcement Fabric
6. AH+ Top Coat
7. 250mm AH+ Liquid & Reinforcing Fabric
8. AH+ Jointing Tape
9. 20mm Liquid only to waterproofing termination
10. Vent Pipe by others
11. Optional Proprietary Cloaking by others
12. Jubilee Clip or similar compression fitting sealed with appropriate sealant



SIG Design & Technology  
 Mannheim House, Gelders Hall Road  
 Shepshed, Leicestershire LE12 9NH  
 Tel: 0844 443 4778 Fax: 01509 505475  
 Internet: [www.singleply.co.uk](http://www.singleply.co.uk)  
 Email: [info@singleply.co.uk](mailto:info@singleply.co.uk)

TITLE:

**AH+ VENT PIPE PENETRATION**

DATE:

02.09.2019

DRAWN BY:

RH

SCALE:

NTS

DRAWING No:

AH+16warm

REVISION: