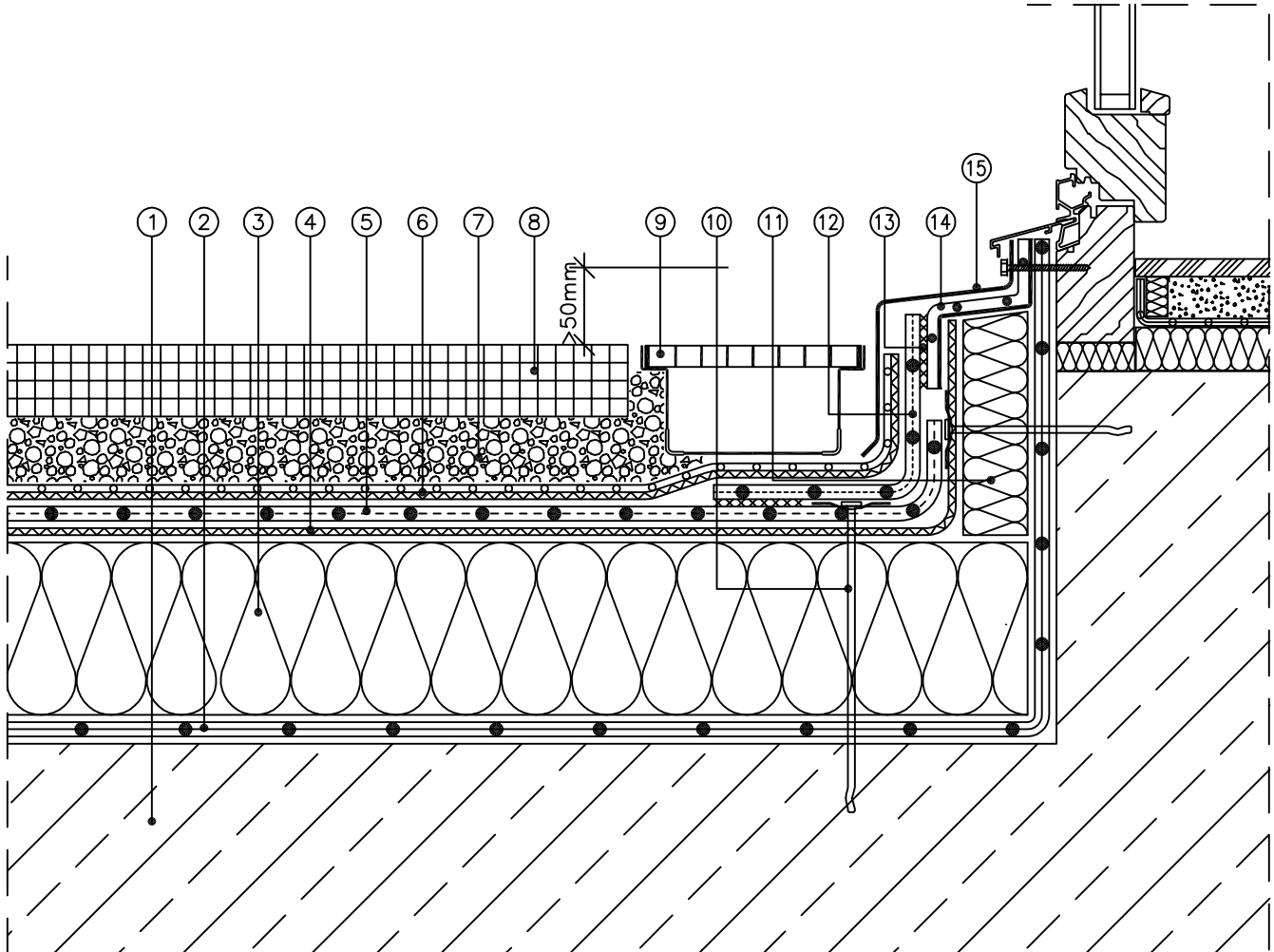


Roof Design

Rhenofol CG loose laid with ballast

Rhenofol CG for terraced areas
 Flashing against door sill with gutter
 Non ventilated roof / Warm roof



Scale 1:5 (The layers relevant to the sealing are shown accentuated)

- | | |
|--|----------------------------------|
| ① Reinforced concrete | ⑨ Gutter with grid |
| ② FDT vapour control layer PE | ⑩ Perimeter fixing |
| ③ Thermal insulation to specification | ⑪ Thermal insulation |
| ④ Separation layer, FDT glass fleece 120 g/m ²
(See page 48) | ⑫ Rhenofol CG flashing strip |
| ⑤ Roofing membrane Rhenofol CG, min 1.5 mm thick
(See page 48) | ⑬ Welding |
| ⑥ FDT protection layer | ⑭ Rhenofol laminated metal angle |
| ⑦ Soft sand | ⑮ Metal flashing |
| ⑧ Paving slabs | |