

# Roof Design

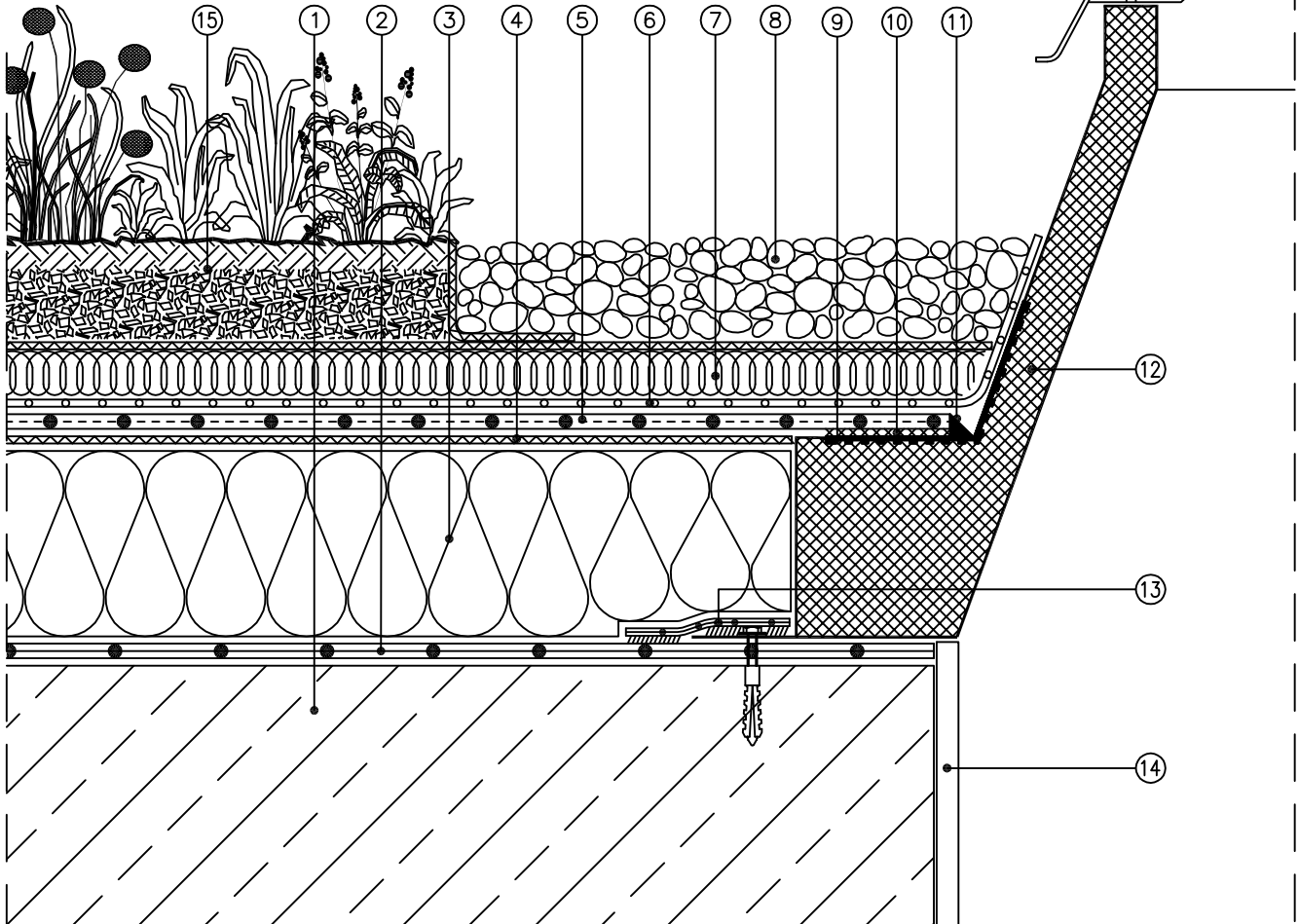
## Roof gardens

### with Rhenofol CG, loose laid with ballast

Extensive roof garden with Rhenofol CG  
 Roof light connection  
 Non ventilated roof / Warm roof

**Note:**

The upstands must be approved by the roof light manufacturer for this application, otherwise a separate perimeter fixing is required.



Scale 1:5 (The layers relevant to the sealing are shown accentuated)

- |  |   |
|--|---|
| ① Reinforced concrete                                    | ⑨ Integrated rigid PVC strip                |
| ② FDT vapour control layer PE                            | ⑩ Welding                                   |
| ③ Thermal insulation to specification                    | ⑪ Rhenofol paste                            |
| ④ Separation layer FDT glass fleece 120 g/m <sup>2</sup> | ⑫ Insulated roof light kerb                 |
| ⑤ Roofing membrane Rhenofol CG, 1.5 mm thick             | ⑬ FDT connection tape for vapour barrier PE |
| ⑥ PE separation layer, 0.2 mm thick                      | ⑭ Plaster                                   |
| ⑦ Drainage and filter mat                                | ⑮ Vegetation mat                            |
| ⑧ Min. 50 mm round washed gravel<br>(20mm – 40mm diam.)  |   |