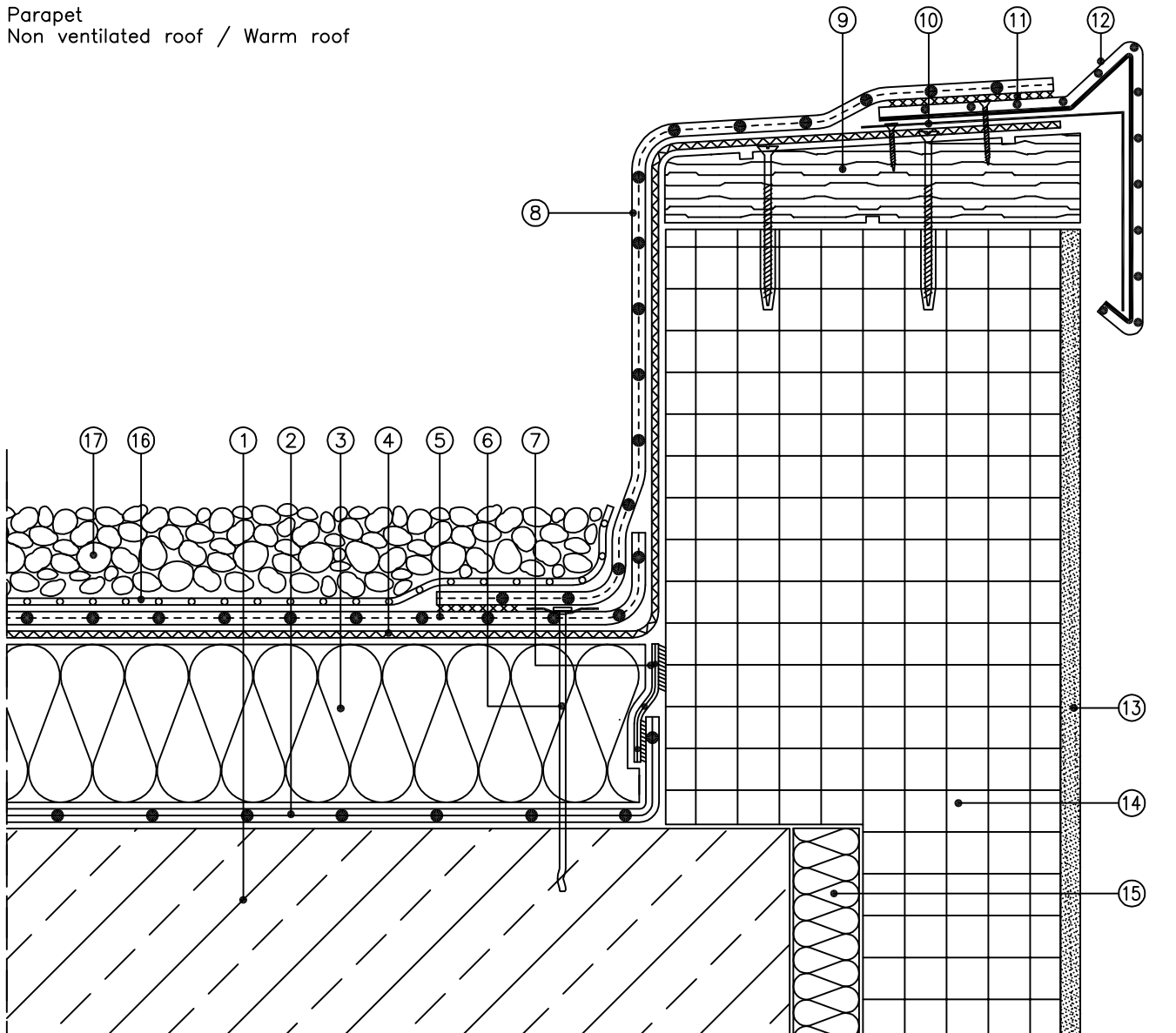


Roof Design

Rhenofol CG loose laid with ballast

Parapet
Non ventilated roof / Warm roof



Scale 1 : 5 (The layers relevant to the sealing are shown accentuated)

- | | |
|---|--|
| ① Reinforced concrete | ⑩ Stiffening profile |
| ② FDT vapour control layer PE | ⑪ Welding |
| ③ Thermal insulation to specification | ⑫ Rhenofol laminated metal drip |
| ④ Separation layer, FDT glass fleece 120 g/m ² | ⑬ Render finish |
| ⑤ Roofing membrane Rhenofol CG | ⑭ Lightweight brick work |
| ⑥ Perimeter fixing | ⑮ Thermal insulation |
| ⑦ FDT connection tape for FDT vapour control layer PE | ⑯ PE separation layer, 0.2mm thick |
| ⑧ Rhenofol CG flashing strip | ⑰ Min. 50mm round washed gravel (20mm - 40 mm diam.) |
| ⑨ Treated timber profile | |