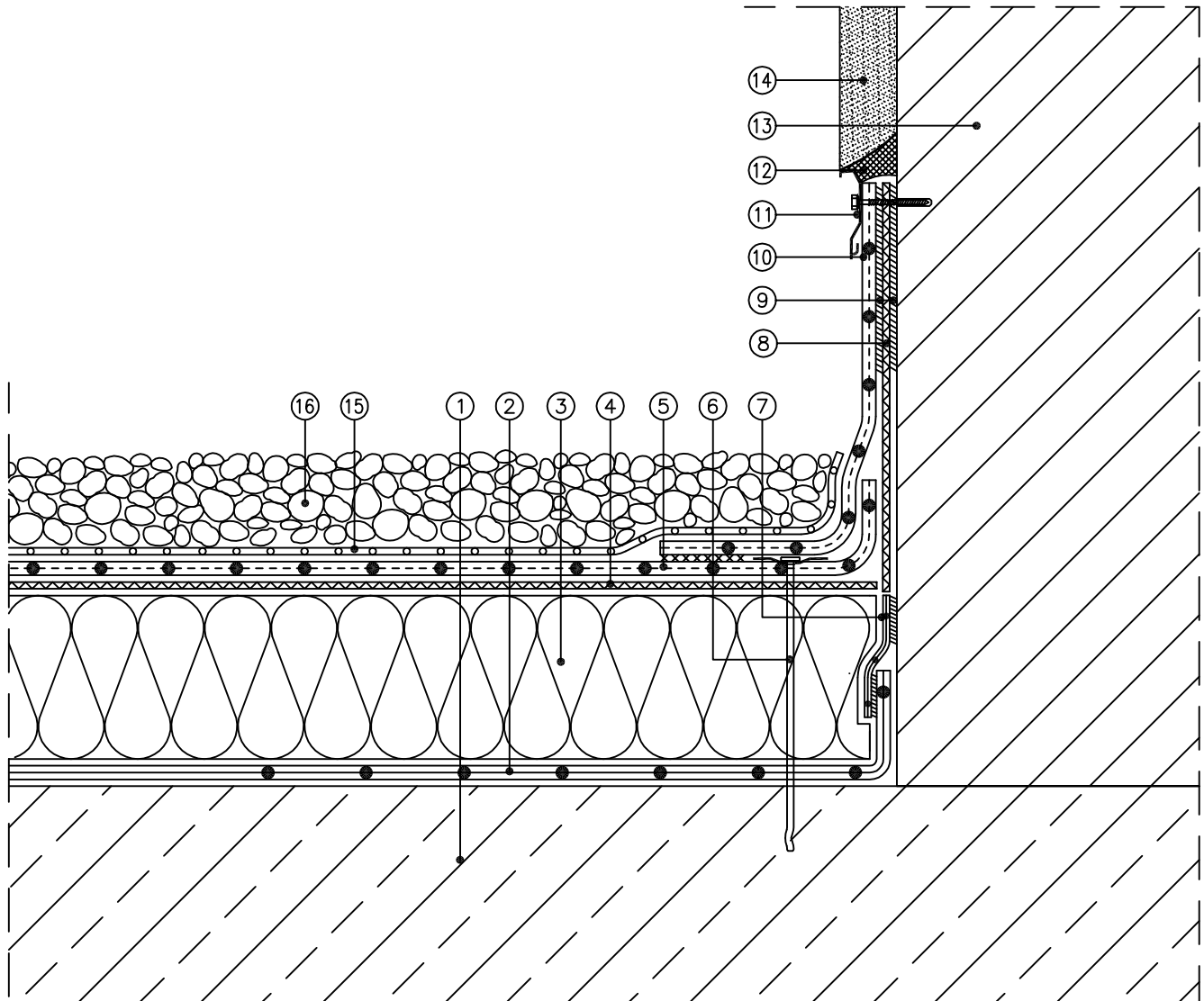


Roof Design

Rhenofol CG loose laid with ballast

Wall connection
Non ventilated roof / Warm roof



Scale 1 : 5 (The layers relevant to the sealing are shown accentuated)

- | | |
|--|---|
| ① Reinforced concrete | ⑨ Rhenofol Contact Adhesive No. 20 |
| ② FDT vapour control layer PE | ⑩ Rhenofol CG flashing strip |
| ③ Thermal insulation to specification | ⑪ FDT wall connection profile |
| ④ Separation layer, FDT glass fleece 120 g/m ²
(See page 36) | ⑫ FDT acrylic sealant |
| ⑤ Roofing membrane Rhenofol CG | ⑬ Blockwork |
| ⑥ Perimeter fixing | ⑭ Render finish |
| ⑦ FDT connection tape for FDT vapour control layer PE | ⑮ PE separation layer, 0.2 mm thick |
| ⑧ Separation layer as required | ⑯ Min. 50 mm round washed gravel
(20mm – 40mm diam.) |