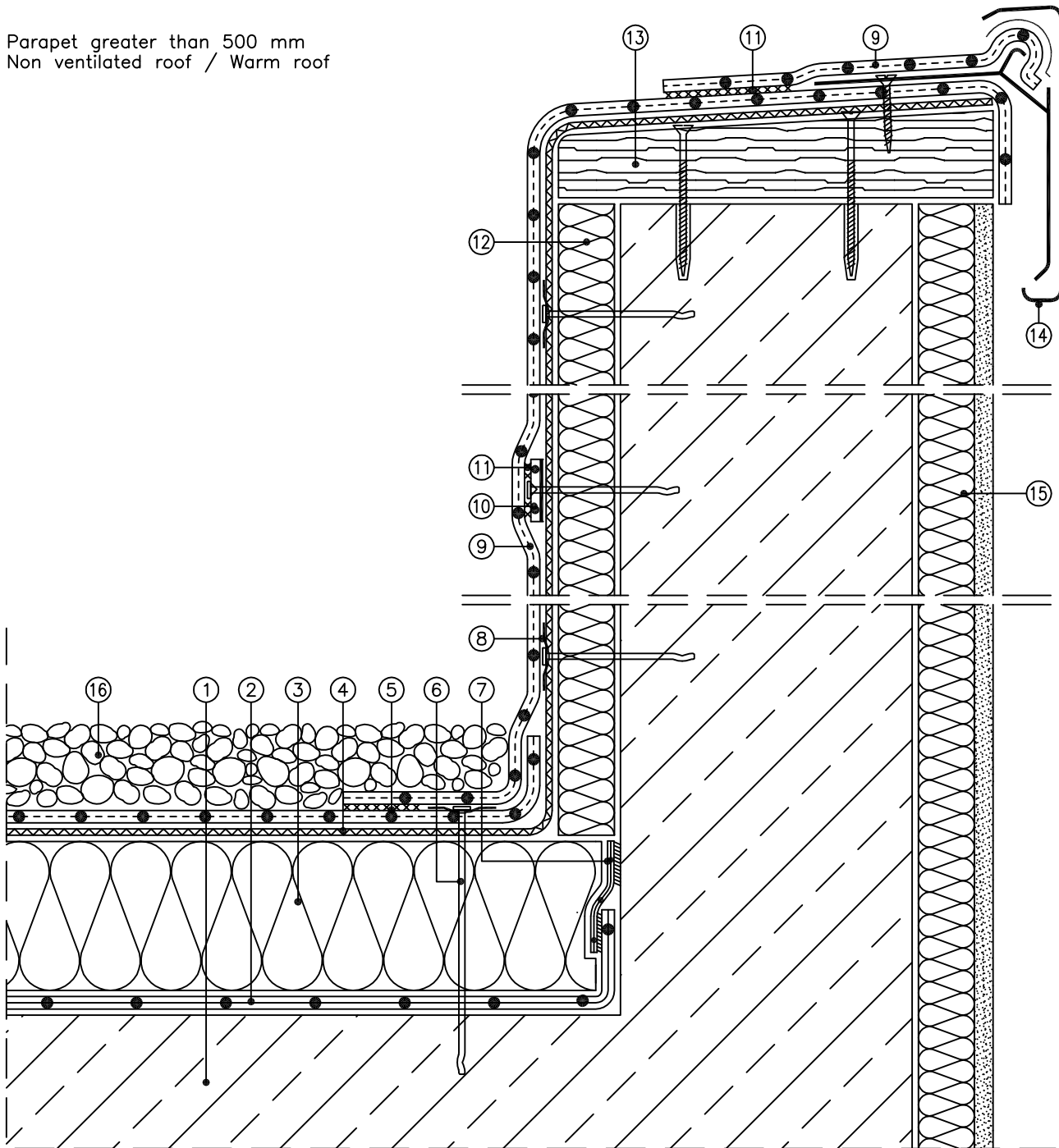


Roof Design

Rhenofol CG loose laid with ballast

Parapet greater than 500 mm
Non ventilated roof / Warm roof



Scale 1 : 5 (The layers relevant to the sealing are shown accentuated)

- | | |
|--|---|
| ① Reinforced concrete | ⑨ Rhenofol CG flashing strip |
| ② FDT vapour control layer PE | ⑩ Rhenofol laminated metal strip
(Minimum width: 50mm) |
| ③ Thermal insulation to specification | ⑪ Welding |
| ④ Separation layer, FDT glass fleece 120 g/m ²
(See page 36) | ⑫ Thermal insulation |
| ⑤ Roofing membrane Rhenofol CG 1.5 mm thick
(See page 37) | ⑬ Treated timber profile |
| ⑥ Perimeter fixing | ⑭ FDT edge trim profile |
| ⑦ FDT connection tape for FDT vapour control layer PE | ⑮ Thermal insulation |
| ⑧ Mechanical fixing | ⑯ Min. 50 mm round washed gravel
(20mm – 40mm diam.) |
| | ⑰ |