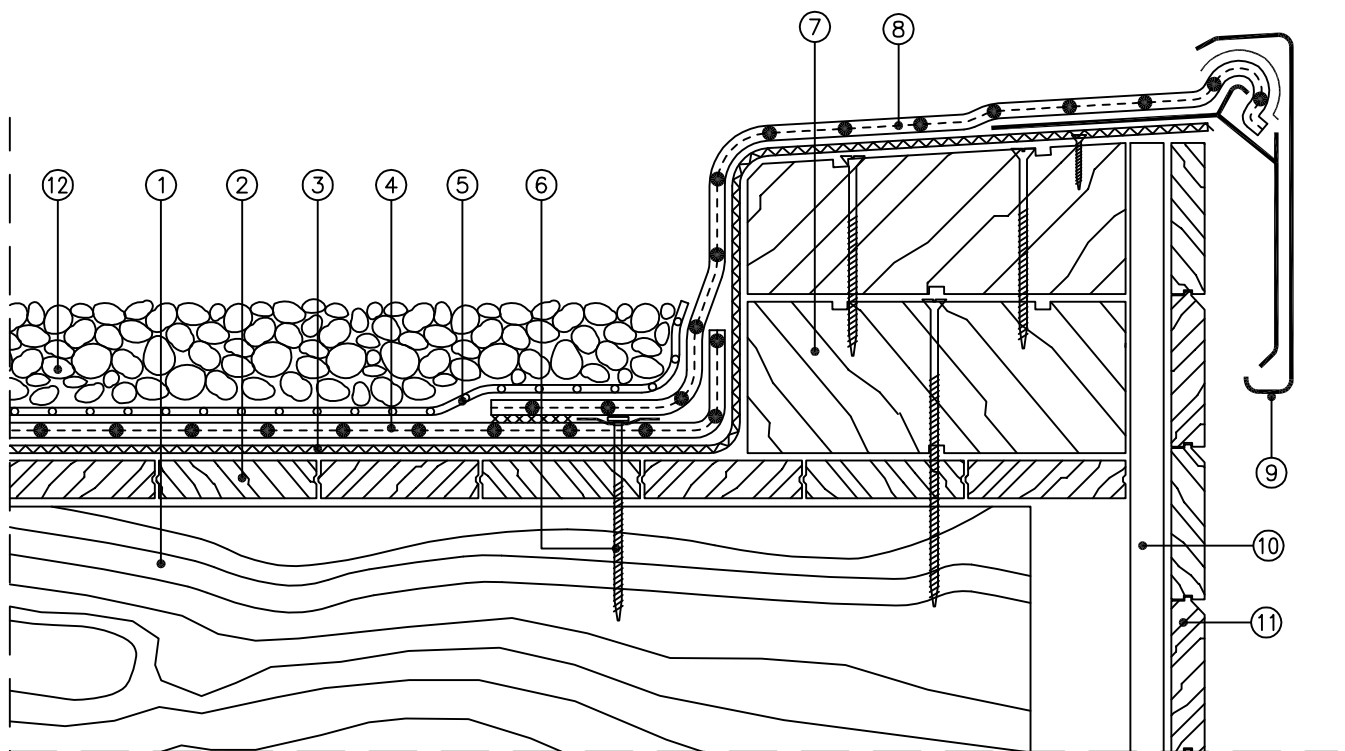


Roof Design

Rhenofol CG loose laid with ballast

Parapet
Ventilated roof / Cold roof



Scale 1:5 (The layers relevant to the sealing are shown accentuated)

- | | |
|---|---|
| ① Joist | ⑦ Treated timber profile |
| ② Close boarded timber | ⑧ Rhenofol CG flashing strip |
| ③ Separation layer FDT synthetic fleece (see page 36) | ⑨ FDT roof edge trim |
| ④ Roofing membrane Rhenofol CG | ⑩ Counter batten |
| ⑤ PE separation layer, 0.2 mm thick | ⑪ Close boarded cladding |
| ⑥ Perimeter fixing | ⑫ Min. 50 mm round washed gravel
(20mm – 40mm diam.) |