

LiveRoof Hybrid Modular Green Roof



Making the roof work harder

With Britain's population predicted to increase to 70 million by 2029, space to build is becoming increasingly harder to find. Currently there are millions of m² of roof space wasted – this valuable amenity could be developed to:

- Capture carbon
- Generate power
- Provide a green space and living zone
- Insulate the building
- Capture rainwater
- Provide a natural and bio-diverse, wildlife habitat

Contact SIG Design & Technology to find out more about using your new or existing roof space.

Instant seamless green roofs Simple modular installation



About SIG Design & Technology

SIG Design & Technology is a part of SIG Exteriors, a leading division of SIG plc, a FTSE 250 listed company and the UK's market leading specialist supplier to professionals in the building and construction industry.

SIG Design & Technology are at the forefront of roof design, exclusively supplying a wide range of 21st Century solutions. Every component is carefully researched and selected for its sustainability, functionality and longevity enabling SIG Design & Technology to provide market leading guaranteed roofing solutions.

LiveRoof Hybrid Modular Green Roof System

LiveRoof Lite is a fast and effective method of creating an extensive green roof without the need for specialist knowledge or tools.

A seamless coverage of Sedum vegetation - grown in the UK by Blackdown - is established (to a minimum 90% cover) in a specially-developed volcanic rock-based growing medium within the LiveRoof module.

Unlike traditional tray systems, the LiveRoof module is designed such that tray edges are concealed and water, nutrients and organisms are shared naturally across the entire rooftop.



Applications

- New and refurbishment roofing
- Commercial or domestic roofing
- Flat roofs
- Pitches up to 20° with suitable retention measures
- Compatible with most waterproofing types

LiveRoof Lite dimensions and weights

Length	610mm
Width	305mm
Area	0.186m ²
Depth (total)	approx. 90mm
Unit weight (Wet/Dry)	approx. 15.5/8.0kg
Weight per m ² (Wet/Dry)	approx. 64.5/43.0kg

Notes:

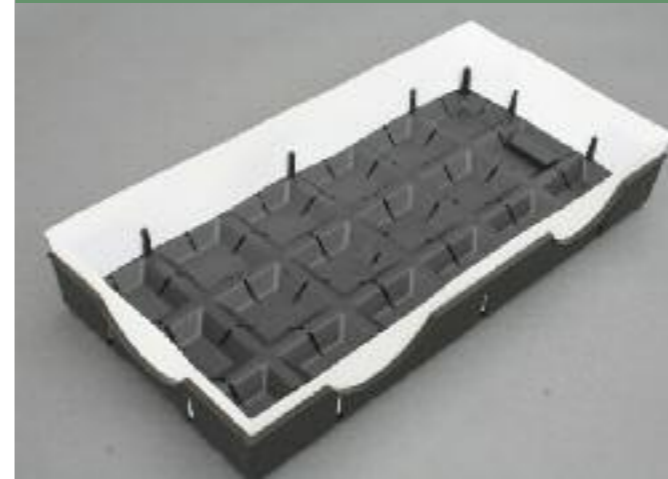
Always verify that the roof structure has sufficient structural capacity to support the saturated weight of the green roof modules and any additional loading requirements.

The plant layer's appearance will vary seasonally.



The LiveRoof by Blackdown System

LiveRoof Lite Tray with Soil Elevators



Blackdown Volcanic Rock-based Substrate



Blackdown Sedum Plant Layer



Simple steps to the perfect green roof

Step one

Installer sets modules tightly in place on the roof within recommended edge treatments.



Step two

The Soil Elevator™ is removed for a beautiful, seamless instantly mature green roof.



Step three

Water thoroughly to settle any loose growing medium and to get your LiveRoof off to a great start.

