

ARMOURPLAN STANDING SEAM PROFILE

PRODUCT INFORMATION

Armourplan PVC Standing Seam Profile is a preformed profile used to simulate a metal standing seam joint. The profile is manufactured from PVC and is hot air welded to the installed Armourplan Membrane at a layout specified by the client.

FEATURES & BENEFITS

- Cost effective standing seam imitation
- Quick and easy installation
- Attractive roof finish

Material	PVC
Length	2000mm
Height	30mm
Width	41mm
Colour	Mid Grey / Slate Grey
Product Number	48002000 / 49002000



INSTALLATION

Mark out the position of the standing seam profiles across the completed roof area and pull a string/chalk line to achieve a straight edge.

Tack welds the standing seam profile on to the completed roof to hold into position.

Option 1 – Fully hot air weld each flange of the profile to the roof surface.

Option 2 – Tack weld the profile to the roof at 200mm centers along each edge of the profile flange. The tack welds should be staggered.

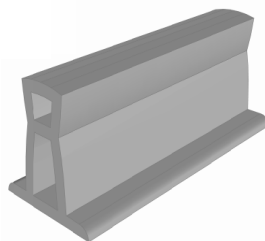
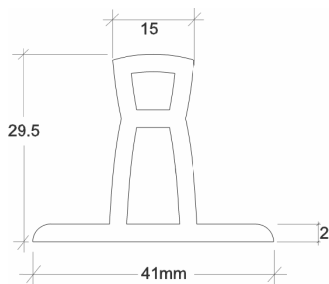
Allow a 2mm gap between the end of each profile for expansion / drainage.

Option - At the end of the line of profiles install a small section of Armourplan membrane over the end of the profile by hot air welding to the cut end.

STORAGE

Armourplan Standing Seam Profiles should be kept dry. They should be stored raised off the surface of the roof and covered with a suitable waterproof layer

TECHNICAL SPECIFICATION



FURTHER PRODUCT INFORMATION

Full product literature, health & safety and technical sheets are available as downloads from our website www.ikopolymeric.com or on request by email polymeric.marketing@iko.com.