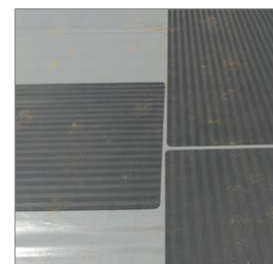


## Armourplan Walkway

### Walkway Membrane

#### Product Details

<b>Thickness</b>	2.0mm
<b>Widths</b>	1.0m
<b>Length</b>	20m
<b>Colour</b>	Anthracite (nearest RAL 7016) Mid Grey (nearest RAL 7046)
<b>Material</b>	PVC-P
<b>Reinforcement</b>	N/A



#### Introduction

Armourplan Walkway membrane is a 2mm thick anthracite or mid grey coloured PVC walkway membrane available in 1.0m wide x 20m long rolls and is hot air welded to the roof surface in a layout as specified by the client. The chevron patterned walkway membrane provides a slip resistant surface and provides additional protection to the waterproof membrane in areas where mechanical damage is more likely to occur. Armourplan Walkway membrane can be installed over either mechanically fastened or adhered Armourplan roofing systems.

#### Features & Benefits

- Chevron Patterned
- Contrasting colours available for demarcation
- Excellent UV resistance and durability
- Excellent mechanical properties and product performance
- Efficient and safe installation
- Secure seam welding quality

#### Armourplan Walkway Installation

1. Before installing the walkway membrane on to the completed roof area thoroughly check the installed Armourplan membrane for any weak welds, mechanical damage and ensure the area is clean dry and free from any debris or contamination.
2. If the walkway is to be heavily trafficked or Rockwool thermal insulation board has been used a 0.9mm galvanized steel spreader sheet should be installed either beneath the waterproofing membrane or beneath the walkway membrane. The spreader sheet should be wrapped in IKOtex fleece and each corner fixed to the substrate using suitable IKOfix fasteners.
3. Unroll the Walkway Membrane, cut to length if necessary and neatly round off any corners.
4. Hot air weld the Armourplan Walkway membrane to the Armourplan membrane beneath carrying out any seam preparation in accordance with the IKO Polymeric Armourplan installation handbook.
5. Once the welds have cooled check the weld integrity by using a seam probe or 4mm wide screwdriver (with rounded edges) along the seam applying pressure into the seam. Repair any defects as necessary.
6. Repeat the process leaving a 25mm gap between each roll end. Do not overlap the Armourplan Walkway membrane as the chevron pattern may prevent a fully sealed weld being achieved.

#### IKO Polymeric

Coney Green Road, Clay Cross  
Chesterfield, S45 9HZ

**Tel:** 01257 488 000

**Sales:** [polymeric.sales.uk@iko.com](mailto:polymeric.sales.uk@iko.com)

**Technical:** [polymeric.technical.uk@iko.com](mailto:polymeric.technical.uk@iko.com)

## Typical Properties

Characteristic properties	Unit	Method	IKO Armourplan Walkway
Thickness +10%/- 5%	mm	EN 1849-2	2.0
Length +1%/- 0.5%	m	EN 1848-2	20.00
Width +1%/- 0.5%	m	EN 1848-2	1.00
Weight +10%/- 5%	g/m <sup>2</sup>	EN 1849-2	2400
Slip Resistance (Potential for slip)		BS7976-2	Low
Minimum Overlap	mm		N/A
Minimum welding width (Automatic)	mm		>30
Minimum welding width (Hand Welder)	mm		>60
Welding temperature	°C		385 - 450
Recommended welding speed (Automatic Welder)	m/min		1.8

## Further Product Information

Full product literature and technical sheets are available as downloads from our website: [www.ikopolymeric.com](http://www.ikopolymeric.com) or on request by email: [polymeric.marketing@iko.com](mailto:polymeric.marketing@iko.com)

Whilst every care is taken to see that the information given in this literature is correct and up to date it is not intended to form part of any contract or give rise to any collateral liability, which is hereby specifically excluded. Intending purchasers of our materials should therefore verify with the company whether any changes in our specification or application details or otherwise have taken place since this literature was issued.

Company Registered in England No. 2678296 – Registered Office: Appley Lane North, Appley Bridge, Wigan, Lancashire, WN6 9AB



NS5Plus

**IKO Polymeric**  
Coney Green Road, Clay Cross  
Chesterfield, S45 9HZ

**Tel:** 01257 488 000  
**Sales:** [polymeric.sales.uk@iko.com](mailto:polymeric.sales.uk@iko.com)  
**Technical:** [polymeric.technical.uk@iko.com](mailto:polymeric.technical.uk@iko.com)